



**Beaufort County  
Public Works  
Stormwater Infrastructure  
Project Summary**

**Project Summary:** George Williams Lane

**Activity:** Routine/Preventive Maintenance

**Narrative Description of Project:**

Project improved 75 L.F. of drainage system. Reconstructed 75 L.F. of workshelf. Repaired washout.

**Duration:** 2/9/16 - 1/4/17

<b>2014-537A / George Williams Lane</b>	<b>Labor Hours</b>	<b>Labor Cost</b>	<b>Equipment Cost</b>	<b>Material Cost</b>	<b>Contractor Cost</b>	<b>Indirect Labor</b>	<b>Total Cost</b>
AUDIT / Audit Project	0.5	\$11.75	\$0.00	\$0.00	\$0.00	\$6.62	\$18.36
HAUL / Hauling	58.0	\$1,311.10	\$474.86	\$2,238.40	\$0.00	\$852.76	\$4,877.12
ONJV / Onsite Job Visit	11.0	\$371.98	\$39.26	\$18.80	\$0.00	\$269.17	\$699.21
PI / Project Inspection	1.0	\$34.18	\$3.54	\$7.52	\$0.00	\$24.47	\$69.71
RPWO / Repaired Washout	24.0	\$567.12	\$40.98	\$146.37	\$0.00	\$336.96	\$1,091.43
SC / Sediment Control	38.0	\$845.81	\$102.20	\$45.84	\$0.00	\$541.02	\$1,534.87
WSREC / Workshelf - Reconstructed	12.0	\$273.20	\$50.72	\$26.74	\$0.00	\$176.64	\$527.30
<b>2014-537A / George Williams Lane Sub Total</b>	<b>144.5</b>	<b>\$3,415.13</b>	<b>\$711.56</b>	<b>\$2,483.66</b>	<b>\$0.00</b>	<b>\$2,207.64</b>	<b>\$8,817.99</b>
 <b>Grand Total</b>	 <b>144.5</b>	 <b>\$3,415.13</b>	 <b>\$711.56</b>	 <b>\$2,483.66</b>	 <b>\$0.00</b>	 <b>\$2,207.64</b>	 <b>\$8,817.99</b>

Before

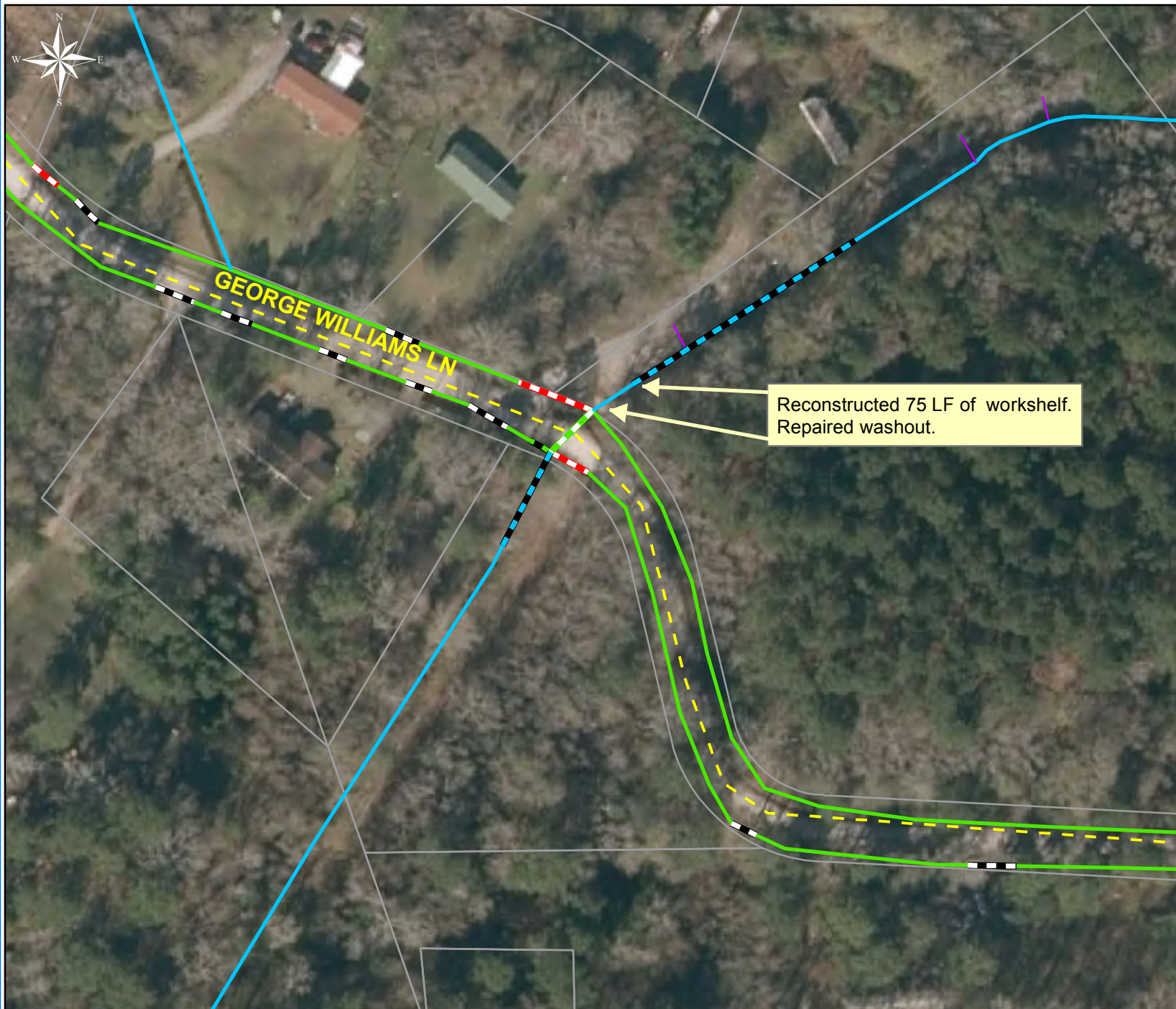


During



After





Project: George Williams Lane

Activity: Routine/ Preventive Maintenance

Project #: 2014-537A

Township/SW Dist: Sheldon/5

Completed: January 2017

Legend	
<b>Drainage Type</b>	
	Access Pipe
	Bleeder Pipe
	Channel Pipe
	Channel
	Stream
	Crossline Pipe
	Driveway Pipe
	Lateral
	Lateral Pipe
	River
	Road Pipe
	Roadside
	Roadside Pipe



1 inch = 100 feet

Prepared By: BC Stormwater Management Utility  
 Date Print: 02/14/17  
 File: C:\project summaries map\George Williams Lane\_2014-537A